



This exhibition is supported in part by The Friends of the Jamaica Plain Branch of the Boston Public Library, a non-profit dedicated to planning and sponsoring free educational and cultural programs for all who visit the JP Library. The exhibition series is managed in partnership with Uforge Gallery. www.friendsjplibrary.org

Eli Portman

A City in 7 Years

September 2 – October 28, 2022

The Jamaica Plain Branch of the Boston Public Library
30 South Street | Jamaica Plain, MA 02130

Please email artist directly for artwork inquires or purchases.

www.eliportman.com



“Hancock in Steps”
Pen and Ink, Watercolor

15.5”X22” Unframed \$465.00



“Fire Escape Armchair Lounge”
Pen and Ink, Watercolor

13”X16”
Unframed

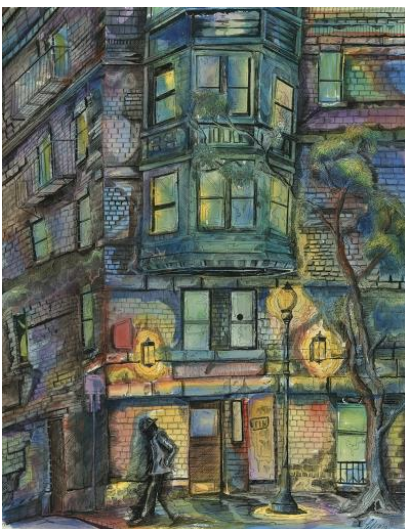
\$250.00



**“Three and a Half Stages”
(Outside the Window)**
Pen and Ink, Watercolor

14.75”X22”
Unframed

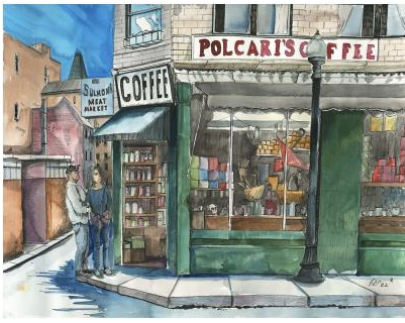
\$500.00



**“Midnight Hour on a Sweltering Summer's
Eve (on Mass Ave)”**
Pen and Ink, Watercolor

16.5”X20.5”
Unframed

\$395.00



"Polcari's Coffee, Boston's North End"
Pen and Ink, Watercolor

21"X18"
Unframed

\$415.00



"Fire Escape and Hammock in the North End"
Pen and Ink, Watercolor

15"X16.75"
Unframed

\$465.00



"Front Door, 10 ½ Beacon Street"
Pen and Ink

22"X16.5"
Unframed

\$550.00



"Ripples in the Dark" (Charles River)
Pen and Ink

13"X13.5"
Unframed

\$400.00



“Train Rumbles By” (Fenway)
Pen and Ink

18.25”X25.25”
Unframed

\$495.00



“Isabella Stewart Gardner Museum II”
Watercolor on Paper

14.75”X22
Unframed

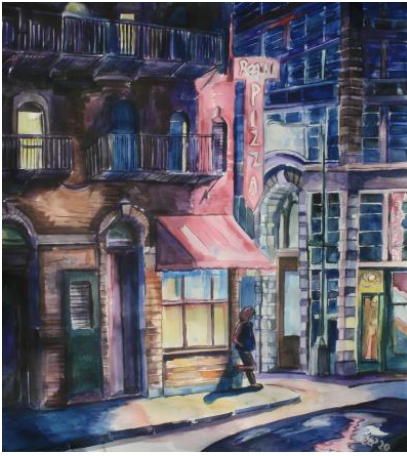
\$450.00



“Bosworth Street”
Pen and ink, Watercolor on Paper

30”X20.5”
Unframed

\$525.00



“Winter Night on Thacher Street, North End”
Watercolor on Paper

19”X21”
Unframed

\$525.00



“Knapp Street Alleyway, Chinatown”
Watercolor on Paper

30”X21”
Unframed

\$515.00



“Copley Square Spring Rain in Pink”
Watercolor on Paper

30”X22”
Unframed

\$625.00